



# Annual Community Report



# Growing Together







Weintraub Israel Center (WIC)/  
Young Leadership Division (YLD)  
Sigd Happy Hour

**Rooted in Jewish values, Jewish Philanthropies of Southern Arizona (JPSA) – home to Southern Arizona’s Jewish Federation and Jewish Community Foundation – seeks to inspire, galvanize and support local community members and organizations in building and sustaining a strong, caring, vibrant Jewish community for today and tomorrow.**

JPSA achieves its mission by building Jewish community, developing communal leadership, promoting Jewish identity through education and engagement, supporting the vulnerable, and advocating for the well-being and security of the Jewish people—locally, in Israel, and around the world.

Through its Federation work, JPSA strategically engages donors, supporters, and community partners to address and plan for the current and future needs of the Jewish people—locally, in Israel, and around the world. Through its Foundation, JPSA collaborates with fundholders and organizations to build endowments and legacies, while creating opportunities to support the diverse needs of the broader Southern Arizona community.

**It is only through the care and support of our donors and fundholders that JPSA can create meaningful and lasting impact.**



# Message from Hava Leipzig Holzhauer

## Jewish Philanthropies of Southern Arizona President and CEO

Dear Friends,

**Thank you once again for your incredible support of our community throughout the year. Last year we set out to grow together, and together we did just that.**

We are proud to share with you the 2024 Annual Community Report, a snapshot of our collective work. It is only together that we successfully create and sustain a vibrant, safe Jewish community for today and for tomorrow. This 2024 view into JPSA's work spotlights our community's generous donors and fundholders, and touches on the programs, events and work we support which help make Jewish life in Southern Arizona accessible and meaningful.

In 2024, we evaluated our philanthropic and programmatic efforts, organizing them into four primary **Pillars of Impact: Strengthening Jewish Life at Home, Caring for Those in Need, Building Jewish Resilience, and Connecting with Israel & Global Jewry.** Through these pillars, we enhanced opportunities for learning and engagement, provided core and supplemental allocations to our five beneficiary agencies, and addressed emerging needs - expanding capacity and security for agencies and synagogues alike. In the spirit of Tikkun Olam, we also extended our support to a wide range of needs across Southern Arizona. Notably, we launched the Center for Jewish Resilience (CJR) to sharpen our focus on security, strengthen allyship and community relations, and combat contemporary antisemitism.

We place high value on that in which we participate and help to create. **Your support for and participation in JPSA's community-wide efforts makes it all possible and makes it ever more meaningful.** These joint efforts change for the better not only our community but also ourselves. Together - *Beyachad* - we are making a difference.

With gratitude for our incredible community,



Hava Leipzig Holzhauer  
President & CEO



Hava Leipzig Holzhauer  
President & CEO

---

**In 2024 we also launched the Center for Jewish Resilience (CJR) to sharpen focus on security, build meaningful allyship and community relations, and push back against contemporary antisemitism.**

---

# Only together and with your help, our community thrives

Jewish Federation's Annual Campaign provides core allocations and grant funding to our five beneficiary agencies, area Jewish organizations, synagogues, and dozens of local initiatives, ensuring vibrant Jewish life, supporting the most vulnerable among us, and uplifting our entire community.

## Jewish Federation's Beneficiary Agencies

### Jewish Family and Children's Services



Our partnership with JFCS is rooted in our shared desire to serve the Southern Arizona community. Joint initiatives such as Senior Transportation, Jewish Emergency Financial Assistance (JEFA), and Mitzvah Magic help us care for those in need.

### Tucson Hebrew Academy



Strong opportunities for Jewish education create the fabric of our Jewish community. Our partnership with Tucson's premier community Jewish day school plants the seeds for a vibrant Jewish future – educating the next generation of Jewish leaders.

### Tucson Jewish Community Center



We proudly provide support for and partner with the Tucson J to foster an engaged Jewish community. Through shared initiatives such as the Weintraub Israel Center, PJ Library & PJ My Way, and AgeWell Day, we educate, enhance, and enrich Jewish Tucson.

### Tucson Jewish Museum & Holocaust Center



Working with the Tucson Jewish Museum & Holocaust Center, JPSA supports initiatives and projects which educate our community and provide critical workshops to push back against hate and teach the lessons of the Holocaust.

### University of Arizona Hillel Foundation



U of A students thrive as part of a proud and empowered Hillel community. Support from JPSA provides Jewish students the opportunity to travel to Israel with Birthright, to provide a safe space for students to gather on campus to learn, pray, and socialize, and to have a home away from home.



University of Arizona Hillel Foundation



# Our Four Pillars of Impact

Our work is rooted in a deep commitment to strengthening Jewish life at home, caring for those in need, ensuring a secure future through building resilience, and fostering global connections to Israel and global Jewry.

## Strengthening Jewish Life at Home

Through education, leadership development, and community engagement, we create meaningful opportunities for Jewish connection, learning, and growth – ensuring a vibrant Jewish future in Southern Arizona.

## Caring for Those in Need

From providing critical support to Holocaust survivors and isolated seniors to offering financial assistance for families in crisis, JPSA is a safety net for our most vulnerable community members – ensuring we take care of our community.

## Building Jewish Resilience

We push back against antisemitism, strengthen civic engagement and allyship, and invest in community security – ensuring that Jewish Southern Arizona is strong, safe, and empowered.

## Connecting with Israel & Global Jewry

Our deep ties to Israel and Jewish communities worldwide are fostered through educational programs, missions, international partnerships, and the work of the Weintraub Israel Center – ensuring *Klal Yisrael*.

## Tobin Board Leadership Program





## Strengthening Jewish Life at Home

We have been **Strengthening Jewish Life** in Southern Arizona in a multitude of ways including through the following:

- **Tobin Board Leadership Program:** JPSA brought together and graduated its second Tobin cohort, offering participants foundational training in nonprofit board service through a Jewish lens. Funded by the Saul Tobin Fund for Jewish Continuity held at JCF, the program supports local synagogues and Jewish agencies in building stronger governance and lay leadership.
- **Young Leadership Division (YLD):** In 2024, JPSA's YLD revitalized both the **Young Men's Group** and **Young Women's Cabinet**, engaging the next generation of Jewish leaders and connecting them to their heritage in fresh, meaningful ways. Social programs such as a *Tu B'Av Happy Hour*, *Israel Uncorked*, and a *Sigd Happy Hour* (in partnership with the Weintraub Israel Center) brought together members of our young adult community (ages 22-45) for learning, networking, and fun.
- **Unlocking Healing Narratives: The Transformative Power of Storytelling:** With support from the **Cindy Wool Memorial Seminar Fund** held at the Jewish Community Foundation, after a COVID-era hiatus JPSA brought back this meaningful initiative and featured Dr. Suzanne Koven.



Young Leadership Division

## Caring for Those in Need

JPSA continues to **Care for Those in Need** by extending a lifeline to Holocaust survivors, those who are isolated or vulnerable, and individuals and families facing difficult challenges. This is accomplished through programs such as:

- **Mitzvah Magic:** In April we celebrated 16 years of this cherished partnership with Jewish Family and Children's Services, providing assistance and holiday fun to Jewish families experiencing economic hardship in Southern Arizona.
- **Homer Davis Project:** Jewish Federation supports the students of Homer Davis Elementary—where over 85% live below the poverty line—through the provision of school supplies, snacks, and food packs during school breaks.
- **Project Isaiah:** Our annual High Holiday food drive, held in partnership with local synagogues and Jewish organizations, raises critical funds and awareness to combat hunger in the broader Tucson community.
- **Mishe-BEAR-ach:** A lighthearted initiative to bring comfort to those in recovery, this program delivers a cuddly bear along with healing wishes to community members facing health challenges.
- **AgeWell Day:** AgeWell Day, a community collaboration between JPSA, Handmaker, Jewish Family & Children's Services, and the Tucson J, welcomed over 80 members of the Jewish community ages 60+ for a morning of activities and camaraderie. This program is funded by various donor endowments held at the Jewish Community Foundation.





## Building Jewish Resilience



Hanukkah Share the Light

Jewish Federation is helping our community **Build Jewish Resilience** through civic engagement, public affairs, secure communities, and countering modern antisemitism.

- Center for Jewish Resilience (CJR):** Launched as a hub for civic engagement, education, and advocacy, the Center equips our community with the tools to combat antisemitism, build alliances, and elevate communal strength.
- Jewish-Latino Teen Coalition (JLTC):** This program unites high school sophomores and juniors from Jewish and Latino backgrounds to explore shared values and social challenges. The 2024 cohort's capstone trip to Washington, D.C., included lobbying efforts focused on food insecurity.
- Early Childhood Security Grant:** A \$99,489 grant from The Tepper Foundation via Jewish Federations of North America, allowed us to bolster safety measures for Jewish early childhood education programs—including preschools, day camps, and after-school activities—ensuring peace of mind for families and staff alike.



## Connecting with Israel & Global Jewry

Our community is **Connecting with Israel & Global Jewry** through education, community cohort missions, international partnerships, and the Weintraub Israel Center (WIC).

- 2024 Israel Solidarity Mission:** Ten Tucsonans traveled to Israel for a deeply meaningful 5-day mission to stand in solidarity, bear witness, and offer direct support to those impacted by recent conflict. This life-changing experience underscored our community's deep ties to Israel.
- With Broken Hearts, and Heads Held High: Community-Wide October 7 Commemoration:** Israeli singer-songwriter Micha Biton, whose family survived the October 7<sup>th</sup> terror attack on Israel, shared through song and spoken word, the story of that terrible day and the pain, strength, and hope of the year that followed with more than 1,000 Southern Arizona Jewish community members and allies.
- WIC's Living Bridge Newsletter:** In 2024, the WIC launched a refreshed monthly e-Newsletter featuring updates from Senior Community Shlichah, Yuval Malka. The newsletter provides timely updates on the war in Israel, local events, book and film recommendations, and more.

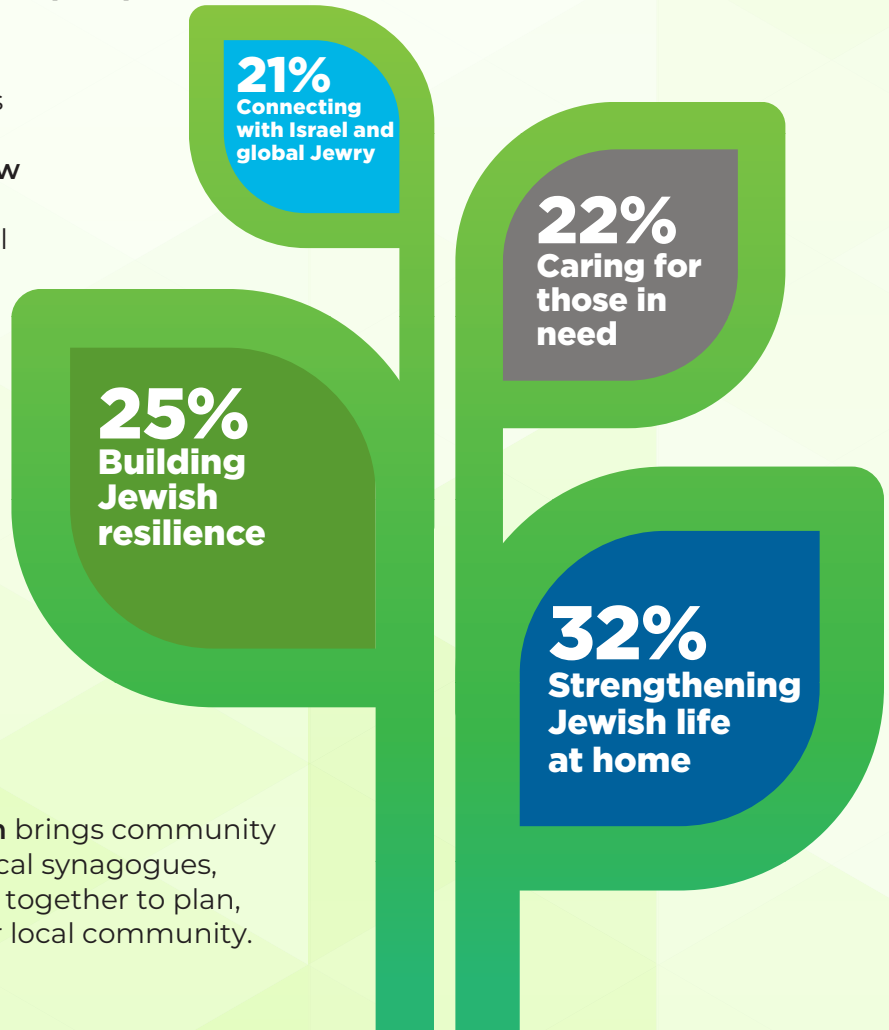


# 2024 Jewish Federation Funding Snapshot

Jewish Federation funding aligns with our **Four Pillars of Impact** - supporting our local institutions, including JPSA's five beneficiary agencies, and a variety of programming for the community. Below is a representation of the organizations, projects, initiatives, and programs supported within each pillar.

## Strengthening Jewish Life at Home (32%)

- Jewish Federation provides unrestricted allocations and grant funding to five beneficiary agencies including the **Tucson Jewish Community Center**, **Tucson Hebrew Academy**, and the **University of Arizona Hillel Foundation**, which all provide services to our community that enrich Jewish life.
- The **PJ Library Initiative** provides Jewish children with free books to build a Jewish library and meaningful connection to Jewish learning.
- **JPSA's Affinity Groups** engages various cohorts to encourage shared learning, socializing, and the opportunity to give back to our community; examples include **Real Estate and Allied Professionals (REAP)**, **Young Leadership**, and **Women's Philanthropy**.
- The **Jewish Community Ecosystem** brings community members and representatives of local synagogues, Jewish agencies, and organizations together to plan, build, advance, and strengthen our local community.



## Caring for Those in Need (22%)

- **Jewish Family and Children's Services** helps care for those in need in our local community.
- **Chaplaincy Program** – Provides comfort and companionship to ailing members of our Jewish community.
- **Indigent Burial** – Assists those unable to afford a traditional Jewish burial.
- **Jewish Emergency Financial Assistance (JEFA)**, a program funded by Jewish Federation and administered by JFCS, provides financial assistance for the neediest Jewish families in our community.
- The **Inclusion Program** supports students with learning, developmental, and mental health challenges, providing the opportunity to actively participate in local Hebrew and Religious School programming.
- **Senior Transportation** – JPSA partners with two transportation services to provide rides and companionship assistance for Jewish adults 65+ and individuals with disabilities, helping them get to doctors appointments, the grocery store and pharmacy, and attend Jewish community events.



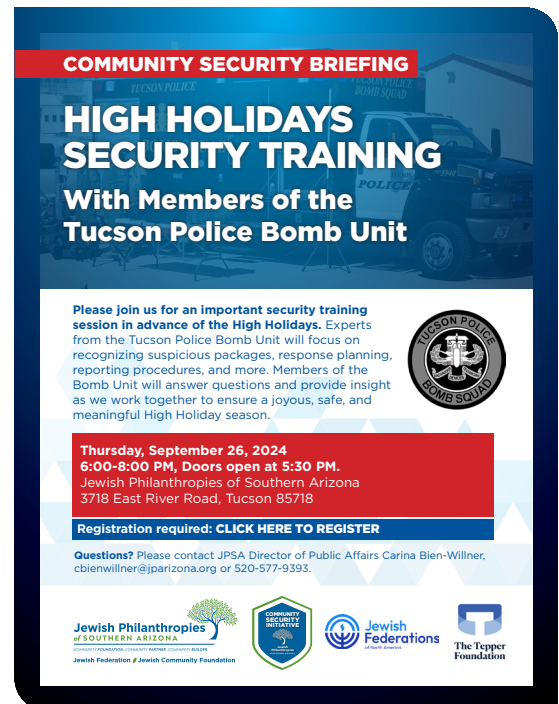
# 2024 Jewish Federation Funding Snapshot

## Building Jewish Resilience (25%)

- **Center for Jewish Resilience (CJR)** – Through JPSA's CJR we strengthen local efforts in public affairs, civic engagement, security, and push back against modern antisemitism.
- JPSA's newest beneficiary agency, the **Tucson Jewish Museum & Holocaust Center** educates our community about the Holocaust and other genocides, explores the legacy of Jewish experiences in Southern Arizona, preserves the first synagogue in the Arizona Territory, and collaborates with Tucson's diverse community to promote human rights.
- **Jewish Community Security** – JPSA helps keep our local synagogues and Jewish organizations safe. Our professional security team conducts security trainings, responds to incidents, assists with the security grants process, and provides regular informative reports to Jewish community leaders.

## Connecting with Israel & Global Jewry (21%)

- **The Shaliach Program** strengthens our bond with Israel by bringing an Israeli emissary to Southern Arizona to educate, engage, and inform our community.
- **Funding the Weintraub Israel Center (WIC)** provides the opportunity to build a living bridge to Israel, its people, culture and history through community-wide events and programming.
- **JPSA supports Birthright Israel**, providing all young Jewish adults with the opportunity for transformative and immersive shared experiences in Israel and a foundation for ongoing Jewish connection.
- **JDC Global Hunger Relief** – Tens of thousands of elderly Jews and families around the world live in dire poverty. JDC ensure that they never have to choose between essentials like food and medicine by providing food packages and personal connection to social workers, at no cost to them.
- The **Momentum Journey of Growth** provides the inspiration to connect to Jewish values, engage more deeply with Israel, and gain the confidence to take action by standing up and speaking out, giving each woman a guide to reaching their own personal and communal potential in influencing the Jewish journey of her children, her family, and her community.



## Jewish Community Security



## Momentum Journey of Growth

# Jewish Community Foundation (JCF) at JPSA

## *Securing our Future: The Jewish Community Endowment Initiative*

In 2024, the Jewish Community Foundation of Southern Arizona launched the **Jewish Community Endowment Initiative**, a collaborative effort to build long-term sustainability for Jewish life across our region. As part of this initiative, JCF partners with Jewish community agencies and synagogues to provide a customized endowment-building program tailored to each organization's unique mission, capacity, and circumstances.

Central to the program is a five-part workshop series, led by JCF professionals, covering core topics such as endowment fundamentals, donor stewardship, and effective marketing. **Fourteen** local organizations are currently participating, gaining the knowledge and tools needed to grow their endowments and strengthen their financial futures.

Fostering community philanthropy across generations and deepening partnerships with professional advisors the initiative builds a broad base of support for endowment growth—ensuring that our community institutions have the stability to thrive for generations. With the support of the JCF's Jewish Community Legacy Committee, the initiative is also elevating success stories and educating donors on how legacy giving can make a lasting impact.

Rooted in the belief that *our actions today will shape our future for generations to come*, this initiative continues the work of those who came before us—safeguarding Southern Arizona's Jewish community for tomorrow. Join us in shaping the future!





## *Building Bridges Through Philanthropy:*

# Launching the Trusted Charitable Advisor Program

In spring 2024, the Jewish Community Foundation of Southern Arizona proudly launched its first **Trusted Charitable Advisor (TCA)** cohort—part of a program developed by JCF San Diego to equip professional advisors with tools to better support their clients' philanthropic goals.

The inaugural group of **16 professionals**, including attorneys, tax experts, and financial planners, completed a four-part workshop series led by Sharleen Wollach, JCF San Diego's Vice President and Chief Impact Officer, and JCF professionals. The program focused on integrating charitable planning into holistic financial strategies, aligning giving with clients' values and community impact.

The success of the first cohort led to a second group beginning in late 2024, strengthening JCF's partnerships with the professional advisor community and expanding the reach of strategic philanthropy across Southern Arizona.

Looking ahead, JCF remains committed to growing the TCA program and empowering advisors to help shape meaningful legacies for generations to come.



## *What Participants are Saying*

"The knowledge and education from this course will undoubtedly enhance my firm's ability to provide the best charitable planning tools for our clients."

- **Brandy Maben, CFP, MS, Windrock Wealth Management**

"The JCF is a wonderful organization that all members of the community, regardless of faith, should utilize."

- **James Riley, Attorney, Fletcher Struse Wagner & Derksen**

"This program presented me with a wealth of information about options for charitable giving in a warm environment and in an approachable, digestible way. Highly recommend!"

- **Nicole Meade Jensen, Licensed Fiduciary and Partner, Providia Partners, LLC**

## Expanding Opportunity:

# JCF Donors Champion Education Across Communities

At the Jewish Community Foundation, education remains one of the most profound ways donors create lasting impact. In 2024 and 2025, **a diverse array of donors—through donor advised funds (DAFs) and endowments—**have expanded access to education across age groups, communities, and learning paths.

One JCF donor used their DAF to create two scholarship opportunities specifically for Native American students. The first supports the *Baboquivari Educational Foundation's Empowerment Scholarship Fund*, offering students from the Tohono O'odham Nation a path toward higher education through university, community college, or trade programs. The second scholarship, in partnership with the *American Indian Education Fund*, enables a Native American student to pursue their passion for dance at the University of Arizona's College of Fine Arts.

Another DAF fundholder supported the *Opening Minds through the Arts (OMA)* program in the Tucson Unified School District, bringing essential art and music materials to fifteen schools that otherwise lacked the resources for specialized instruction—enriching the classroom experience for hundreds of children.



Scholarships for Native American Students



Through a JCF endowment, a separate donor is easing financial barriers for students experiencing homelessness. Their gift supports scholarships and educational expenses at local universities, community colleges, and technical and trade schools via *Old Pueblo Community Services*.

Endowment funds also continue to support students every day in classrooms across Tucson. Schools such as **Second Street Children's School**, **Tucson Hebrew Academy**, and **The Gregory School** benefit from their **JCF-held endowments**, providing critical and consistent funding for their educational missions—from preschool through high school.

Together, these stories reflect the power of philanthropy in action: personalized giving strategies, tailored to donors' passions, yielding wide-reaching and inclusive educational outcomes. Whether through a donor advised fund or a permanent endowment, JCF donors are opening doors and shaping futures for students of all backgrounds.



# Foundation Financials

*The future of our Jewish community is being created through the thoughtful planning of visionary donors today.*

## **\$17.8 Million** in grants and distributions (2024)

\$17.8 million in grants and distributions were made through donor advised funds, individual endowment funds, and organization funds.

## **500+** Nonprofits helped (2024)

More than 500 nonprofits in our community and around the world received support from our generous fund holders.

## **\$170.9 Million** in total assets

Value of all assets held by the Jewish Community Foundation.

## **\$22.5 Million** in new contributions (2024)

Donors and organizations entrusted the Foundation with \$22.5 million in new contributions.



## JEWISH PHILANTHROPIES OF SOUTHERN ARIZONA BOARD OF TRUSTEES 2024-2025

Jeff Artzi  
Chair

Susan Jacobson  
At Large

Lisa Lovallo  
At Large

Isaac Rothschild  
At Large

Andrew Comrie  
Secretary/Treasurer

Liz Kanter Groskind  
Immediate Past Chair

### TRUSTEES

Julie Feldman

Elizabeth Friman

Danny Gasch

Leah Geistfeld

Ron Grant

Anne Hameroff

Andy Kunsberg

Emily Lazarus

Jacob Meyer-Van Damme

Donna Moser

Stephen Rodgveller

Steve Rosenberg

Aaron Rottenstein

Scott Sheftel

Ben Silverman

Sarah Singer

### PAST JPSA BOARD CHAIRS

Bruce Ash

Anne Hameroff

Liz Kanter Groskind

### PAST FEDERATION CHAIRS

Bruce Ash

Jack Cole

Richard Fink

Jennifer Miller Grant

Harold Greenberg

Carol Karsch

Jeff Katz

David Kramer

Carole Levi

Steven Lightman

Deborah Oseran

Bobby Present

S. Leonard Scheff

Shelly Silverman

Linda Tumarkin

Kathryn Unger

Thomas Warne

### PAST FOUNDATION CHAIRS

Bruce Beyer

Danny Gasch

Harold Greenberg

Anne Hameroff

Jeff Katz

Brenna Lacey

Jerry Neuman

Stuart Shatken

Keri Silvyn

James A. Whitehill

### BENEFICIARY AGENCIES

Jewish Family & Children's Services

Tucson Hebrew Academy

Tucson Jewish Community Center

Tucson Jewish Museum & Holocaust Center

University of Arizona Hillel Foundation

*Proud Partner of Jewish Federations  
of North America*

## JEWISH PHILANTHROPIES OF SOUTHERN ARIZONA STAFF

### EXECUTIVE

Hava Leipzig Holzhauer, President and CEO

Laura McKee, Executive Assistant to the CEO

Jean Riley, People Operations Specialist

### ACCOUNTING, ADMINISTRATIVE SERVICES & FACILITIES

Kimberly Driskell, Chief Financial Officer

McKenzie Edmiston, Accounting Associate

Michael Gerber, Senior Accountant

Laura Nachtrab, Administrative Services Manager

Anel Pro, Cash Coordinator

Kitty Wu, HR & Payroll Coordinator

### JEWISH COMMUNITY FOUNDATION

Jane Espinoza, VP of Fund Services

Andrew Gale, Legacy Officer

Brenda Landau, Director of Legacy Development

Angie Laskarides, Director of Philanthropic Engagement

### IMPACT AND ENGAGEMENT

Robyn Schwager, Community Impact Manager

### CENTER FOR JEWISH RESILIENCE

Carina Bien-Wilner, Director of Public Affairs

Chelsea Gutierrez, Security Director

Paul Patterson, Security Director

### WEINTRAUB ISRAEL CENTER

Yuval Malka, Senior Community Shaliach

### DEVELOPMENT

Emily Richman, Chief Development Officer

Ian Arthur, Campaign Manager

Jennifer Camano, Director of Corporate and Major Gifts

Ital Ironstone, Women's Philanthropy Manager

Maleny Martinez, Events Coordinator

Maria Sainz, Database Coordinator

Isabella Seeley, Development Assistant

Nate Weisband, Young Leadership Manager





# THANK YOU TO OUR CORPORATE SPONSORS

## PLATINUM



## GOLD



## SILVER



## BRONZE



Harvey & Deanna Evenchik Center for Jewish Philanthropy  
3718 East River Road | Tucson, AZ 85718  
520-577-9393 | jparizona.org